

THE PARKWOOD MASTERPIECE SERIES



2 BEDROOM HOMES

Two module designs

THE PARKWOOD MASTERPIECE SERIES



2 BEDROOM AFFORDABLE HOUSING

THE PARKWOOD MASTERPIECE SERIES

FORWARD

Our Masterpiece Series pays homage to some of the many great *AUSTRALIAN ARTISTS who have helped to shape our culture and reflect the uniquely Australian style.

DOUBLE WIDE MODULE 1 BATHROOM

THE GLOVER - *John Glover
THE NOLAN - *Sidney Nolan
THE LAMBERT - *George W. Lambert
THE LAMBERT B - *George W. Lambert
THE REES - *Lloyd Rees
THE PASSMORE - *John Passmore
THE LINDSAY - *Norman Lindsay
THE ASHTON - *John William Ashton
THE STREETON - *Arthur Streeton
THE WAKELIN - *Roland Wakelin
THE FAIRWEATHER - *Ian Fairweather
THE BOCK - *Thomas Bock

DOUBLE WIDE MODULE 2 BATHROOM

THE DRYSDALE - *Russell Drysdale
THE CROSSLAND - *J. M. Crossland

Illustrations show various roof options that can be applied to most plans from Gable, Hip, Dutch Gable, Skillion, Split Skillion, Flat, and with or without eaves.

THE PARKWOOD MASTERPIECE SERIES

THE GLOVER

9.4 x 7.2 67.6m² living area



The Glover is a great affordable two bedroom layout. Compact with every facility. The 2nd bedroom works well as a study come hobby room. The rear door access position works particularly well when carrying groceries from the carport straight through the laundry to kitchen. The deck as shown is constructed as part of the module and can be varied to any size.



THE PARKWOOD MASTERPIECE SERIES



THE PARKWOOD MASTERPIECE SERIES

THE NOLAN

9.4 x 7.2 67.6m² living area



A versatile living space with a galley kitchen leading to a walk-in pantry with plenty of storage. An added feature is the separate W.C. Shown here with a full factory constructed front deck.



THE PARKWOOD MASTERPIECE SERIES



THE PARKWOOD MASTERPIECE SERIES

THE LAMBERT

9.6 x 7.2 69.1m² living area



A two bedroom abode that offers generous living space, neat kitchen, bathroom and separate WC. Shown here with central entry into living/ kitchen areas and bedrooms to the rear.

The deck as shown is constructed as part of the module.



THE PARKWOOD MASTERPIECE SERIES



THE PARKWOOD MASTERPIECE SERIES

THE LAMBERT B

9.6 x 7.2 69.1m² living area



A flipped version of the Lambert with a larger eat-in kitchen and wall changes for a different feel to this two bedroom layout. Compact with every facility. Shown here with a full length deck built as part of the two modules and skillion roof.



THE PARKWOOD MASTERPIECE SERIES



THE PARKWOOD MASTERPIECE SERIES

THE REES

10.6 x 7.2 76.3m² living area



This very popular two bedder works well when a home with more width and a central entrance is required. Convenient layout providing easy rear access, straight from the car to the kitchen. Deck as illustrated can be varied and is built on site.



THE PARKWOOD MASTERPIECE SERIES



THE PARKWOOD MASTERPIECE SERIES

THE PASSMORE with deck as shown
11.0 x 7.2 70.9m² living area



The Passmore has been such a successful floorplan in our range and it's easy to see why! Great use of space with centrally located open-plan kitchen. The second bedroom offering an excellent study/craft room when not in use as a spare bedroom. Deck is constructed as part of the module section.



THE PARKWOOD MASTERPIECE SERIES



THE PARKWOOD MASTERPIECE SERIES

THE LINDSAY with deck as shown
10.8 X 7.2 72.4m² living area



Winner of the very first NSW HIA Award for transportable homes. A large kitchen with loads of bench space that is all you could need! Ideal for the gourmet entertainer! Illustrated here with a gable roofline. Deck is included as shown and of course extended if required.



THE PARKWOOD MASTERPIECE SERIES

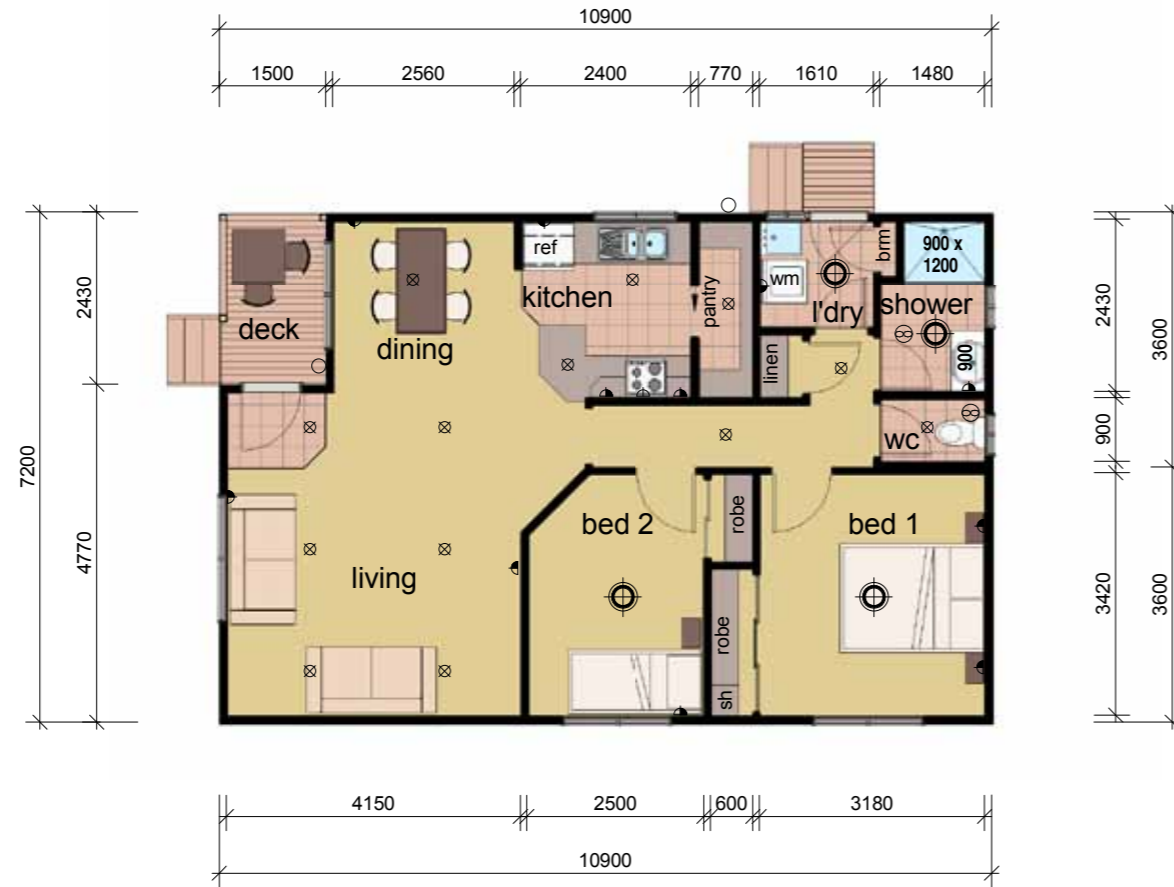


THE PARKWOOD MASTERPIECE SERIES

THE ASHTON with deck as shown
10.9 x 7.2 74.9m² living area



The Ashton also provides a generous kitchen with its large walk-in pantry for the passionate cook. Extra spacious lounge and good size bedrooms add to it's appeal. The deck is included in the module design (as illustrated) and has been reduced in size to benefit a larger living area.



THE PARKWOOD MASTERPIECE SERIES



THE PARKWOOD MASTERPIECE SERIES

THE STREETON with deck as shown
11.6 X 7.2 78.1m² living area



Big brother to the popular Lindsay model. This is a perfect two bedder providing all that you could need for complete independent accommodation. There is a generous feeling of space and a large kitchen. Shown here with a flat roof but suits the many options available.



THE PARKWOOD MASTERPIECE SERIES



THE PARKWOOD MASTERPIECE SERIES

THE WAKELIN

11.5 x 7.2 82.8m² living area



If you are looking for a more private living space, the Wakelin design may be for you! A rear open plan with the living and entertaining areas away from the entry. A large laundry and separate WC, conveniently near the back door, is also a feature. Additional sliding doors and decks can easily be added to the family area. (see "Bock" design)



THE PARKWOOD MASTERPIECE SERIES



THE PARKWOOD MASTERPIECE SERIES

THE FAIRWEATHER

12.5 x 7.2 90.0m² living area



Additional length and practical kitchen/laundry makes this plan a clever use of space. The walled off kitchen is a popular option, giving some seclusion from the general living areas. This plan enjoys larger bedrooms and bathrooms. The deck can be varied in width and length as part of the modules and windows and doors can be varied to create a home unique to you.



THE PARKWOOD MASTERPIECE SERIES



THE PARKWOOD MASTERPIECE SERIES

THE BOCK with deck as shown
14.5 x 7.2 82.8m² living area



An extra large two section two bedroom abode that offers a distinctive style and ample living space. A great entertainer shown here with optional semi covered rear deck, sliding doors outdoor sink and barbecue enclosures. Illustrated with a rounded roof but many roof configurations work well with this floor plan.



THE PARKWOOD MASTERPIECE SERIES



THE PARKWOOD MASTERPIECE SERIES

THE DRYSDALE

12.9 x 7.2 91.5m² living area



The Drysdale has a well conceived central living area complemented by a galley kitchen with walk-in pantry. It offers a huge bedroom complete with ensuite bathroom and walk-in robe. As well as a 2nd bathroom adjacent to the other bedroom. The deck as shown is constructed on site.



THE PARKWOOD MASTERPIECE SERIES



THE PARKWOOD MASTERPIECE SERIES

THE CROSSLAND

12.5 x 7.2 90.0m² living area



A two bedroom home with all the features. Added size to achieve that extra space and comfort. Bedroom one with its' own ensuite and walk-in robe. A good sized main bathroom. Complete with a large open-plan kitchen, pantry and connecting laundry. The deck as shown is constructed as part of the module.



THE PARKWOOD MASTERPIECE SERIES





Sales Office and Manufacturing Plant
7 - 11 Kangoo Rd , Somersby NSW 2250

Manufacturing Facilities
Adjacent to the M1 at Kariong exit

Telephone: 02 4340 4077

Email : info@parkwood.com.au

www.parkwood.com.au

Registered Licensed Builder NSW & ACT Housing and Commercial
Prequalified Service Provider to NSW & ACT Government Procurement

All rights reserved, No part of this publication may be reproduced or copied in any form or by any means without the written permission of Parkwood Modular Buildings

© 2014 Parkwood Modular Buildings Pty Ltd
Build Lic.no. 86240C

